

INCREMENTAL ENCODER MyInc

FINS58 FINH58

- Shaft (FINS) and hollow shaft (FINH) encoder with the same modular concept
- Shaft diameters Ø 6 and Ø 10 mm for shafted encoders
- Hollow shaft Ø 14 mm, aluminium reduction hubs of Ø 6, Ø 10 and Ø 12 mm
- Robustness, excellent shock and vibration resistance
- Easily achievable high degree of protection IP 67 with special sealing flange for shafted versions
- High resolutions available up to 80000 cpt in 3 channels with complements
- Available output signals: square wave, square wave programmable and sine wave
- Simple programmable resolution through dipswitch, no software, no hardware required
- Universal electronic circuits from 4.75 Vdc to 30 VDC
- High operating temperature performance: -30 °C up to 100 °C (encoder temperature)
- High frequency response performance of the output signals: 300 kHz (push-pull & RS422)
- Glass disks in standard, available with unbreakable disks in Polyfas (Composite Mylar-Mica) in option for resolutions <2500 cpt and temperature <80 °C



Replacment for GHM5, GHT5, GHK5, GHO5.

SPECIFICATIONS

	FINS58	FINH58
• COVER	Zinc-aluminium alloy	Zinc-aluminium alloy
• BODY	Aluminium	Aluminium
• SHAFT/HOLLOW SHAFT	Stainless steel	Stainless steel
• TORQUE	0,4 Ncm	0,6 Ncm
• WEIGHT	300 g	300 g
• MAX. SPEED	12 000 min ⁻¹	9 000 min ⁻¹
• RADIAL SHAFT LOADING	100 N	100 N with DAC
• AXIAL SHAFT LOADING	50 N	50 N with DAC
• INERTIA	10 gcm ²	22 gcm ²
• PROTECTION	IP 65	IP 65

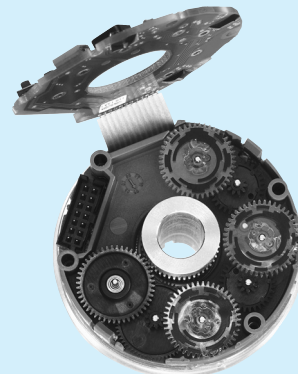
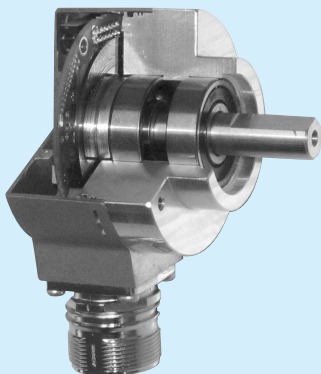
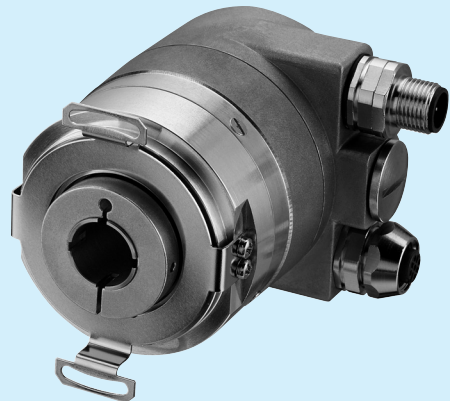
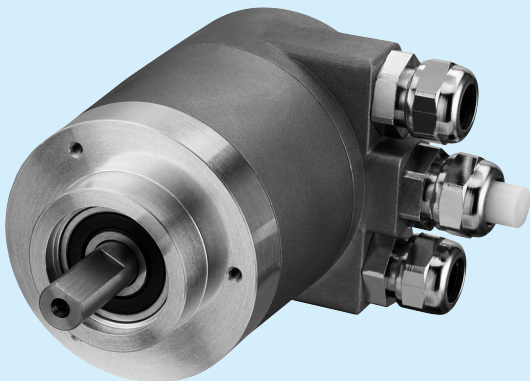
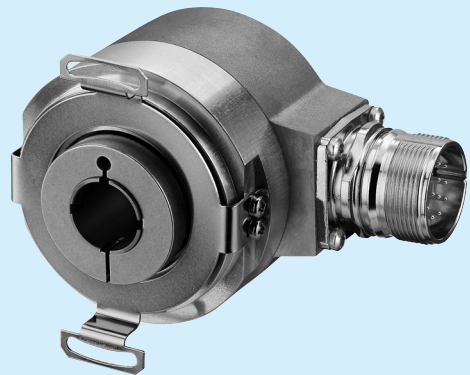
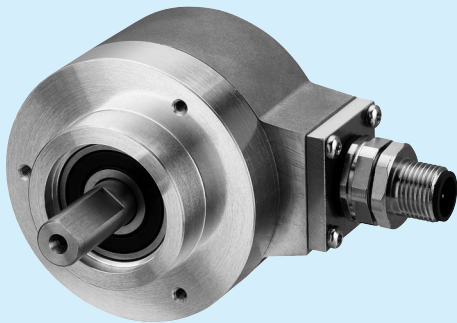
MECHANICAL FEATURES

- Shock resistance:** < 1000 m.s⁻² for 6 ms (EN60068-2-27)
- Vibrations resistance:** < 100 m.s⁻² from 50 to 2000 Hz
- Standard IP 65, IP 67 available with a special flange for the shaft encoders of Ø 10 mm
 - Perfect sealing of the connectors (moulded in the encoder cover)
- Max. Acceleration:** 1.105 rad.s⁻²
- Lifetime of the bearings:** 12 x 10⁹ turns



- Absolute single- and multiturn encoders with SSI, Profibus, CANopen and CANlift outputs
- Shaft and hollow shaft versions with 58 mm diameter
- Resistant diecast housing and protection up to IP 67
- Stainless steel shaft
- Applications: sensing of:
 - Angels
 - Distances, Tracks
 - Inclinations
 - Differences between two or more axes
- Robust double bearing design

- Compact and heavy-duty industrial types
- Shaft Ø 6 or 10 mm
- Blind/hollow shaft Ø 10, 12, 14, 15 mm
- Absolutely safe operation even in strong magnetic fields with optical multiturn gear
- Interface:
 - SSI (RS485)
 - BiSS
 - Profibus DP 2.0 (Profile V1.1, Class 1+2)
 - CANopen/CANlift 2.0B (Profile D5 40683.1)
- New technology absolute encoder



SSI

BISS

CANopen

PROFI[®]
PROCESS FIELD BUS
BUS